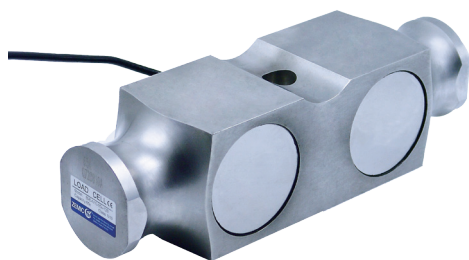


## B9E



- Stainless steel construction, dual shear beam structure, adhesive sealed, compression loading available.
- Ingress protection (according to EN 60529): IP67
- Suitable for electronic truck scales, hopper scales, track scales and other electronic weighing devices.



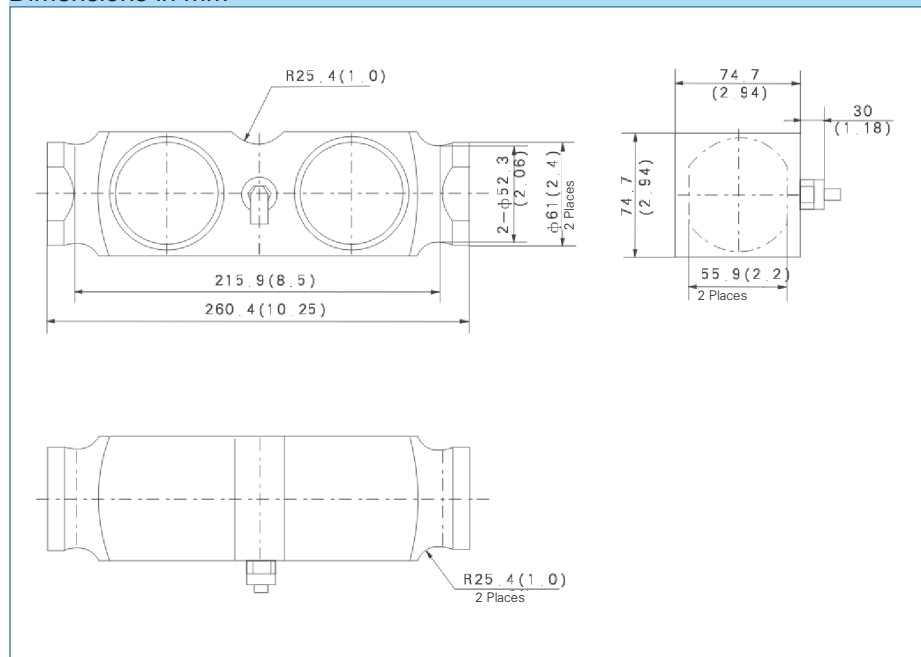
## Available models

Capacity	Accuracy	Full article description
xxklb	C3	B9E-C3-xxK-9B

## Specification

Maximum capacity ( $E_{max}$ )	klb	50/60/65/75/100/125/150
Accuracy class		C3
Maximum number of verification intervals	N.max	3000
Maximum number of load cell intervals ( nLC )	vmin	$E_{max}/10000$
Combined error	%FS	$\pm 0.020$
Creep	%FS/30min	$\pm 0.016$
Temperature effect on sensitivity	%FS/10°C	$\pm 0.011$
Temperature effect on zero	%FS/10°C	$\pm 0.015$
Output sensitivity ( = FS )	mV/V	$3.0 \pm 0.003$
Input resistance	$\Omega$	$700 \pm 7$
Output resistance	$\Omega$	$703 \pm 4$
Insulation resistance	M $\Omega$	$\geq 5000(50VDC)$
Zero balance	%FS	$\pm 1.0$
Compensated temperature	°C	-10~+40
Operating temperature	°C	-35~+65
Excitation, recommended voltage	V	5~12(DC)
Excitation maximum	V	18(DC)
Safe overload	of $E_{max}$	150
Ultimate overload	of $E_{max}$	300
ATEX classification (optional)		II1G Ex ia IIC T4   II1D Ex iaD20 T73°C   II3G Ex nL II C T4

## Dimensions in mm



## Wiring

